

Analyzing pass rush in the NFL: A weighted K -means curve clustering approach

Robert Bajons

Institute for Statistics and Mathematics,
Vienna University of Economics and Business
and

Kurt Hornik

Institute for Statistics and Mathematics,
Vienna University of Economics and Business

February 26, 2025

Abstract

We present a weighted K -means approach for clustering weighted curves, i.e. curves which may be assigned weights at each observation of the curve. The methodology is applied to routes of defending players in American football, with the aim of automatically detecting patterns in the pass rushing behavior of players or teams. Each trajectory of a defensive player during a play is assigned a weight at each point in time, which in our case represents the probability of exerting pressure on the quarterback. In this work, we derive weights using a gradient boosting tree model. Since pass rush routes vary in length due to the variability in the duration of each play, the weighted route data needs to be preprocessed in a first step. We provide a methodology using Bézier curves for unitizing the trajectories to the same length. The preprocessed routes are then fed into the novel weighted curve clustering algorithm. Results demonstrate that our methodology is able to cluster pass rushing routes effectively and much more conveniently than a classical (unweighted) K -means approach. Finally, we present ideas for team and player evaluations in the NFL and discuss potential further use cases of our methodology in sports analytics.

Keywords: Weighted K -means, American football, curve clustering in sports

1 Introduction

Recently, the surge in novel and highly granular data formats such as event stream data, play-by-play data, and tracking data had a powerful impact on the analysis and evaluation of sports (Baumer et al., 2023). In American football, novel ideas such as expected points and win probability (Yurko et al., 2019) have reformed the way analysts think about the game and decisive situations such as 4th downs due to works such as the one by Lopez (2020). Furthermore, these data have stimulated methodological advances in the assessment of player performance in general as well as in specific actions within a play. While the evaluation of offensive players, such as quarterbacks, has already been studied extensively (Burke, 2019; Deshpande and Evans, 2020; Reyers and Swartz, 2021), the analysis of defensive players has proven to be more intricate. Dutta et al. (2020) use Gaussian mixture models on features derived from the movement of players to identify the coverage type for defensive backs. Eager and Seth (2023) develop metrics for the evaluation of linebackers based on comparing their movements to the average movements of similar players. A particularly difficult challenge is to evaluate pass rushers, i.e. defenders that aim to pressure the quarterback (QB) and thereby hindering him (or her) from throwing a pass. Nguyen et al. (2024) measures the effectiveness of pass rushers by deriving features from tracking data, such as the distance between the pass rusher and QB and the rate at which this distance is being reduced.

Another interesting direction that has evolved specifically from tracking data is the problem of clustering the movements of players. In team sports, such as American or European football (soccer), players naturally move on the pitch in specific trajectories. Since usually the paths of players on the pitch follow certain criteria defined by the player’s position as well as the tactics of the team, interesting analyses can be derived from studying common patterns in these movements. Miller and Bornn (2017), for example, evaluated player trajectories in Basketball by clustering possessions into groups of similar offensive structure. Chu et al. (2020) used similar techniques to cluster routes of wide receivers in football and derive a database of predefined routes. Kinney (2020) uses tracking data for identifying offensive routes by matching the shape of the movement of the receiver to a standardized NFL route tree. Such clustering approaches have various benefits: They

allow for the identification and labeling of common and interpretable player movements, facilitate the creation and exploration of databases, and provide insights into the strengths and weaknesses of teams and players.

With our contribution, we aim to further develop the methodology for clustering curves of players in sports. We base our approach on the premise that it is possible to assign weights to the curve at each point in time. In sports, this can usually be achieved intuitively. We provide two examples: First, we consider routes of defensive players in American football. Assuming we are interested in analyzing pass rush in more detail, a natural way to derive weights is to assign pressure probabilities of each defensive player at each point of their trajectory. Another example arises in soccer, where possessions can be analyzed similarly. A possession is a sequence of on-the-ball actions performed by one team, which ends with a predefined outcome (e.g. a shot on the goal or a turnover). If interested in detecting value in possessions, a weight can be assigned at each action of the sequence, e.g. the probability of scoring a goal after i more actions. From the examples, it is clear that the weights emphasize the importance of the curves, and thus are use-case dependent. Having this augmented set of data, it is quite natural to use the additional information in the process of finding structure in the observations. That is, instead of only considering the raw (x, y) -coordinates of players or actions, it may be beneficial to consider the weighted sequence (w, x, y) when performing clustering. Interestingly, to the best of our knowledge, such an idea has not yet been studied in the context of sports analytics.

The specific target of this article is pass rushing routes of defenders. Although being an integral part of the defense in passing plays, the scientific literature on the evaluation or detection of pass rush is scarce. In fact, the STRAIN metric from [Nguyen et al. \(2024\)](#) seems to be the only scientifically published attempt to assess the performance of defensive linemen. However, we believe there is much more to be told about pass rush and view our contribution as a step towards comprehending effective pass rush more accurately.

To be more concrete, we leverage the fact that pressure weights can be assigned to each frame of observation, and derive a weighted K -means approach to cluster these weighted trajectories. At each point in time, the weights represent the probability that a defender will be able to exert pressure on the quarterback, i.e. to either hit, hurry, or sack him.

In this work, we derive the pressure weight from a flexible gradient boosting machine learning model, thoroughly tuned and carefully selecting covariates. In order to use the augmented data as input for our novel weighted K -means curve clustering methodology, it is necessary to develop a framework for transforming curves such that they are all of the same dimensions. Our approach for doing so is inspired by previous work on curve clustering in sports (Miller and Bornn, 2017; Chu et al., 2020), resulting in approximating each trajectory with a Bézier curve and then taking a fixed amount of equidistant points on this curve. Finally, the clustering algorithm provides a detailed breakdown of pass rushing routes. The benefits thereof are manifold: For one, as opposed to an unweighted K -means approach, the algorithm is able to easily distinguish between coverage and pass rush routes, eliminating the need for manually labeling such classification. More importantly, the resulting clusters allow for distinction between high-pressure and low-pressure clusters. This allows for valuable insights such as the identification of team strategies, evaluation of player usage as well as indicators on player and team strengths or weaknesses. Moreover, it allows for the creation of a pass rushing database which facilitates game preparation as well as the scouting of players. To understand the implications of our approach, we use the clustering as a visual tool from which novel insights are drawn. The clearly visible and intuitively interpretable distinction in the resulting clusters of our weighted approach to a classical (unweighted) K -means procedure is remarkable and emphasizes the usefulness of the approach.

The remainder of the paper is structured as follows: Section 2 describes the data and the necessary preprocessing steps. In Section 3, we revise the key ideas from K -means type of algorithms and discuss the necessary adaptations for weighted curve clustering. In section 4, results for the pass rush application are presented, and a comparison to a non-weighted clustering is provided. Furthermore, specific applications for analyzing teams and players are considered. Lastly, we conclude our analysis with a discussion in Section 5, where we outline future directions related to our work and highlight potential use cases of our methodology in other sports contexts.

2 Data and preprocessing

The data used in this work is player tracking data provided by NextGenStats obtained from the NFL Big Data Bowl 2023 competition ([Howard et al. \(2022\)](#)) hosted on [Kaggle](#). It captures the movements of all 22 players on the field at a rate of 10 frames per second. Besides the movement of players on a 2-dimensional plane, the data also contains key information such as orientation, acceleration, and speed of the player, which may be derived from the movement. The game of football is inherently divided into short sequences, so-called plays. Thus the tracking of the players is done play-wise, and the movements are recorded until a specific event happens, which usually indicates that the quarterback gave away the ball¹. Furthermore, the data contains only passing plays, i.e. plays where the quarterback aims to pass the ball to a teammate in order to advance the ball. Figure 1 provides a static display of one sample play in the data. In this case, the routes of the offensive team, the Tampa Bay Buccaneers, are displayed by dotdashed lines, with only the quarterback being represented differently, namely via a dotted line. The defensive routes, in the example from the Dallas Cowboys’ defense, are solid, and the football is marked as a longdashed line. In this work, we are mainly interested in the solid routes in the gray square of Figure 1. These routes show the players that are trying to rush the passer. As the main goal is to find a clustering of the curves, i.e. the (x, y) -coordinates of the player movements, it does not make sense to consider the raw routes. The nature of the game of football allows us to standardize the data such that it may be more useful for clustering. A play always starts at a prespecified point, where the referee spotted the football. On the x -axis the point is referred to as the line of scrimmage. Thus we standardize the data in the following way: First, we transform each play such that the play direction of the offense is always from left to right. Then the x and y -axis are centered at the point where the ball is spotted. In this way, if two plays are identical but one play starts at the 30-yard line and the other at the 50-yard line, the routes are nonetheless the same in the transformed coordinate system.

As mentioned in the introduction, we augment the data by assigning pressure weights at each point in time. In order to keep the computational complexity at a manageable

¹This could be either by passing the ball, being brought down by a sack or by fumbling the ball.

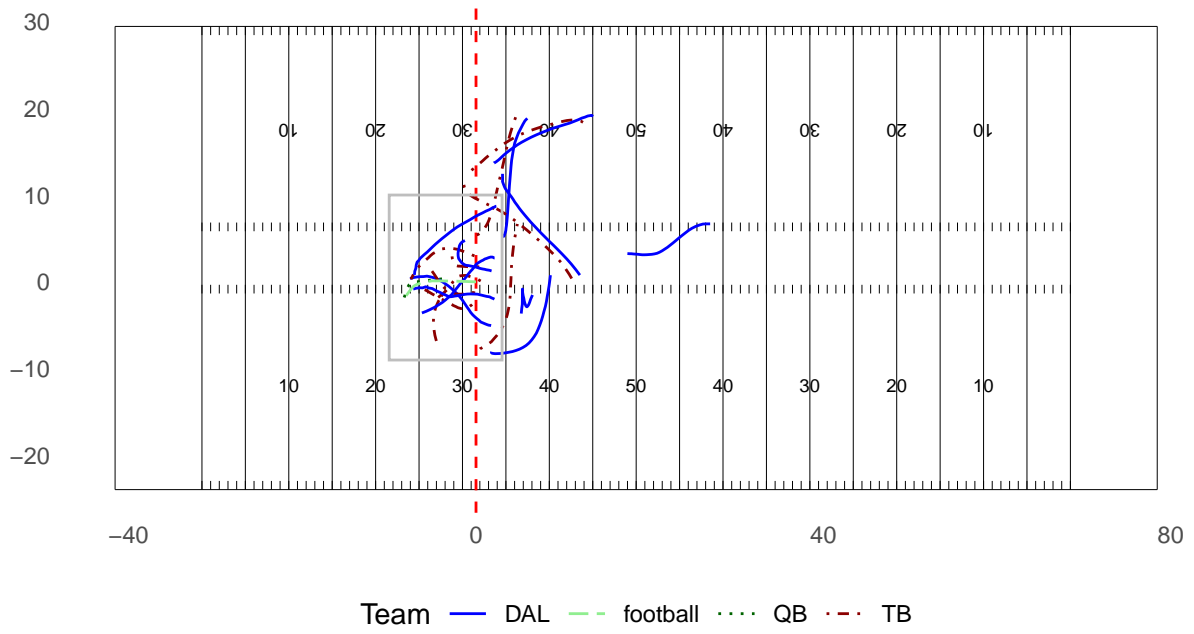


Figure 1: A sample play from the NFL Big Data Bowl 2023 dataset. The data is transformed such that the offense plays from left to right. The x -axis is centered at the line of scrimmage (horizontal dashed line) and the y -axis is centered at the location of the ball snap. The gray rectangle indicated the routes of interest in this work.

level we reduce the granularity of observations to 2 frames per second. The weights are assigned via a machine learning model carefully trained on a number of features extracted from the same data. A detailed description of this procedure can be found in Appendix A. In essence, they can be seen as the probability of a defensive player to be able to hit, hurry, or sack the quarterback within a given play. At this point, we do want to mention that there are many legitimate approaches for assigning weights to curves at each time point. In Figure 2 the pressure weights are added to the routes in the gray rectangle from Figure 1. The resulting data that we aim to cluster is then the augmented set of weights and (x, y) -pairs.

2.1 Bézier curve approximations

Formally, let $\mathbf{Y} = \{\mathbf{y}_1, \dots, \mathbf{y}_n\}$, be the set of all observed defensive routes in our passing play data. Each \mathbf{y}_i is an $m_i \times 3$ dimensional matrix of weighted trajectories, containing a column of x -coordinates, y -coordinates, and a column of weights w . As the duration of a segment varies from play to play, the row dimension m_i of the observations is not fixed. K -means type of algorithms however are not able to handle data of varying dimensions. We follow ideas from previous approaches for clustering curves in sports (Miller and Bornn, 2017; Chu et al., 2020) and initially approximate each trajectory by a Bézier curve in order to get a full representation of the curve. Bézier curves are parametric curves described by a set of control points using Bernstein polynomials $b_p^P(t)$ as basis, taking the form

$$B(t, \boldsymbol{\theta}) = \sum_{p=0}^P \theta_p b_p^P(t), \quad t \in [0, 1], \quad (1)$$

with $b_p^P(t) = \binom{P}{p} t^p (1-t)^{P-p}$, $p = 0, \dots, P$. As control points $\boldsymbol{\theta}$ we use exactly the (x, y) points observed from the trajectory. These control points form a polygon and the Bézier curve defined by them always lies in the convex hull of that polygon. The resulting curve from the observations is a smoothed-out curve, which approximates the shape of the original route. Figure 3 shows how an original route as given by the black dots is smoothly approximated by the Bézier curve (dashed line).

In theory, any form of interpolation or approximation between points such as e.g. cubic splines (see dotdashed line in Figure 3) or else could be used. However, Bézier curves are a

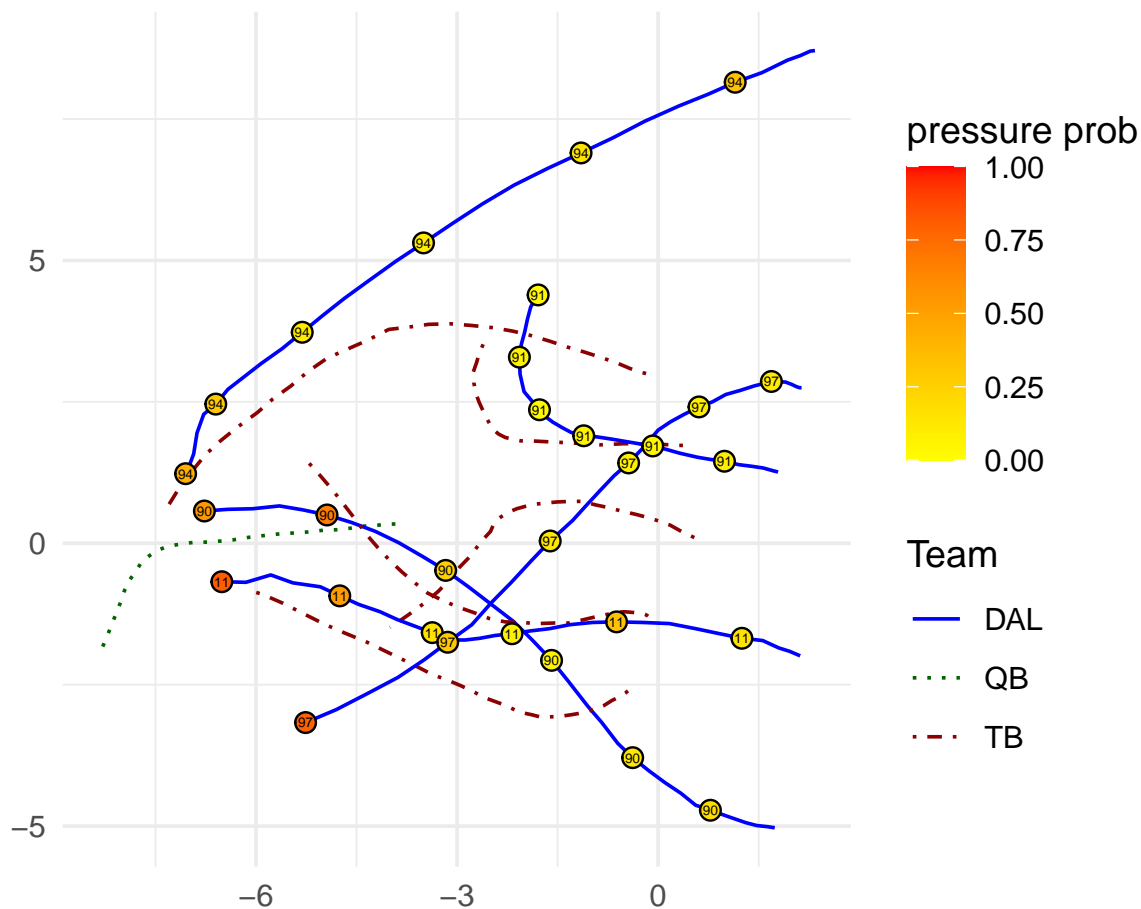


Figure 2: Zoomed into a sample play from the NFL Big Data Bowl 2023 dataset. The offense plays from left to right. The x -axis is centered at the line of scrimmage and the y -axis is centered at the location of the ball snap. Pass rush weights are added to the defensive routes (solid lines).

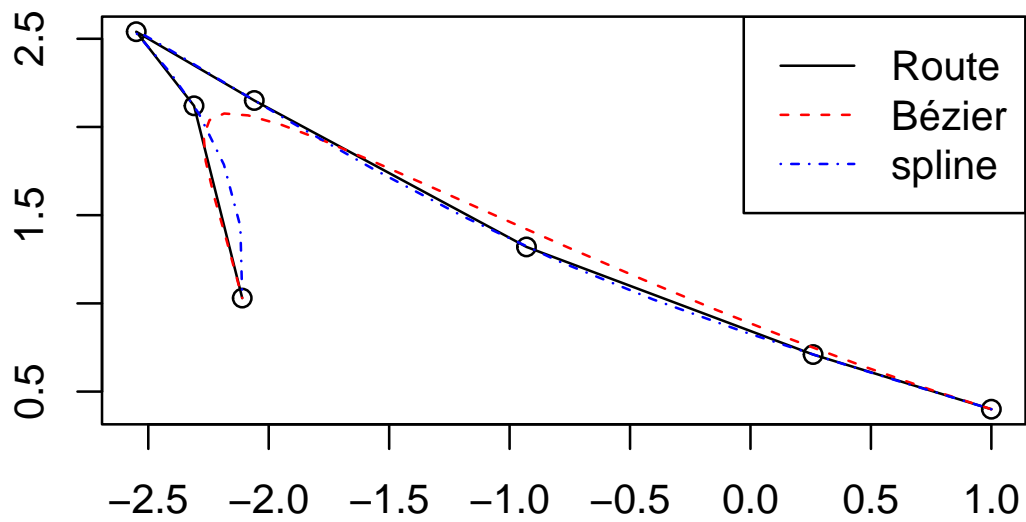


Figure 3: Approximation of a sample route from a defensive football player by curve interpolation.

very general form of curves and have some advantages in our context. First, they are defined on the interval $[0, 1]$, meaning they have a natural starting point at time $t = 0$ and a natural endpoint at $t = 1$. In our pass rush application, the start and end points correspond to the moment that the ball is snapped respectively the moment the quarterback loses possession of the ball. Although the time passed between these two points may vary, conceptually it makes sense to consider the rushing trajectories in this unified way. Furthermore, the Bézier curve approximates the route in a smooth manner. While pass rush moves often contain some sharp turns in order to separate from the opponent, for clustering it makes sense to smooth those out to get a representation of the general shape.

In order to obtain observations of the same dimension we first approximate each route by a Bézier curve. On the fitted curve we then use a prespecified number M of equidistant points which allows us to obtain a representation of the curve as $M \times 2$ -dimensional matrix. In this work, we use $M = 4$ since this is the average length of the (reduced) curves data. Finally, the weights for each route need to be aggregated to be of length M as well. For this project, this is done by taking into account the order of the points (with respect to time) as well as the proximity of the novel M (x, y) -coordinates

3 A framework for clustering weighted curves

3.1 From K -means to weighted K -means

The K -means algorithm ([MacQueen, 1967](#)) is one of the most popular methods for clustering a set of unlabeled data (cf. e.g. [Hastie et al., 2009](#)). Given a set of n observations $(\mathbf{z}_1, \dots, \mathbf{z}_n)$ of dimension J each, the idea is to find a partition of the set into K distinct clusters by minimizing the within cluster sum of squares

$$S = \sum_{k=1}^K \sum_{i:g_i=k} \|\mathbf{z}_i - \mathbf{p}_k\|^2. \quad (2)$$

In this notation, \mathbf{p}_k represents the k -th cluster center, sometimes also referred to as cluster prototype. Minimizing S for a fixed cluster assignment is simple and results in $p_{k,j} = \frac{1}{N_k} \sum_{i:g_i=k} z_{i,j}$, $j = 1, \dots, J$. The general problem of finding the optimal partition of the data into K sets C_1, \dots, C_K is however a hard problem. The usual solution is an iterative

refinement procedure, where, based on the current assignment, one first determines the optimal prototypes \mathbf{p}_k and then reassigns each \mathbf{z}_i to the closest cluster center based on the Euclidean distance. These steps are then repeated until there is no improvement in the objective function S , that is until the change in S between steps is below some numerical tolerance level. This algorithm improves the clustering in each step (i.e. minimizes the objective), however, it may only converge to a local optimum. Thus, usually the initial assignment is varied and the best resulting solution is chosen (Hastie et al., 2009).

The classical K -means algorithm can be easily adapted to the case of weighted observations. In this situation, a given observation \mathbf{z}_i is assigned a weight w_i and the goal is to find a partition of the data into K clusters by accounting for the information from the weights. In the simplest case, the aim is to minimize the weighted within cluster sum of squares

$$S_w = \sum_{k=1}^K \sum_{i:g_i=k} w_i \|\mathbf{z}_i - \mathbf{p}_k\|^2. \quad (3)$$

Given a fixed partition of the data in K clusters, the optimal prototypes \mathbf{p}_k for each cluster k , which minimize equation (3) can again easily be derived as the weighted averages of all the elements in a cluster, i.e.

$$p_{k,j} = \frac{\sum_{i:g_i=k} w_i z_{i,j}}{\sum_{i:g_i=k} w_i}, j = 1, \dots, N. \quad (4)$$

Determining the optimal partition of the data in K clusters in the weighted case is then achieved by adjusting the above described iterative procedure:

1. For the current cluster assignment, find the optimal prototypes \mathbf{p}_k via equation (4).
2. Assign each observation x_i to the closest cluster center (closest in terms of weighted squared distance).
3. Repeat steps 1 and 2 until convergence is achieved, that is, the change in the objective function S_w is below some tolerance level.

3.2 Weighted K -means for curves

Instead of observing one weight w_i for each \mathbf{z}_i , in the case of the football routes we observe weights at each time point. That is for each curve \mathbf{y}_i , the data consists of $(x, y)_t$ -coordinates and weights w_{it} at each time point $t = 1, \dots, M$. It is necessary to perform two adjustments to develop a suitable K -means type of algorithm for such data. First, we need to modify the data, and in a second step, the algorithm needs to be adapted appropriately.

Each observation $\mathbf{y}_i \in \mathbb{R}^{M \times 3}$ is split up into a vector of concatenated (x, y) -coordinates $\mathbf{z}_i = (x_1, \dots, x_M, y_1, \dots, y_M)$ and a vector of weights $\mathbf{w} = (w_1, \dots, w_M, w_1, \dots, w_M)$ of the same dimension. Thus, in this case $J = 2M$ and the problem is then to partition the curves represented by the \mathbf{z}_i into K cluster by solving the following optimization problem:

$$\min_{(p_{jk}), (g_i)} \sum_{k=1}^K \sum_{i: g_i=k} \sum_{j=1}^J w_{i,j} (z_{i,j} - p_{k,j})^2. \quad (5)$$

That is, the aim is to derive the clusters by minimizing the overall weighted squared distance of each point to its cluster prototype. In the spirit of weighted- K -means approaches, we can implement an iterative refinement procedure for solving Problem (5). For a fixed cluster assignment, the optimal prototypes are computed component-wise as

$$p_{k,j} = \frac{\sum_{i: g_i=k} w_{i,j} z_{i,j}}{\sum_{i: g_i=k} w_{i,j}}, \quad j = 1, \dots, J. \quad (6)$$

Given the prototypes, each observation can be assigned to the nearest cluster by minimizing

$$\sum_{j=1}^J w_{i,j} (z_{i,j} - p_{k,j})^2 \quad (7)$$

over k .

The behavior of our proposed algorithm can be nicely interpreted in the context of pass rush plays. In this case, the weights represent probabilities and thus $w_{i,j} \in [0, 1]$. If the weights are high (i.e. close to 1) then the player is on a threatening route and is highly likely to exert pressure on the quarterback. Since these are the routes (i.e. (x, y) -coordinates) that we aim to analyze in detail, we are interested in a more granular clustering for them. On the other hand, if the weights are low (i.e. close to 0) during the full play, then either the player has been blocked effectively or the player most likely did not intend to go on a pass

rush route. In both situations, these routes are of less interest to us. Considering Equation (7), the algorithm assigns observation to the closest cluster based on the weighted Euclidean distance over all time points. Thus, for more threatening plays with higher weights, the spatial distance between the route and its cluster center is more important. This means, that for these routes a more detailed clustering is applied. If the weights are low on the full play, then, as $w_{i,j} \approx 0$ for all $j = 1, \dots, M$, the expression in Equation (7) will be small even if $z_{i,j}$ is far away from $p_{k,j}$. This implies that the spatial distance between the actual route and its cluster center is of less importance.

4 Results and applications

In this section, we present an analysis of the weighted curve clustering algorithm introduced in the previous section for the use case of pass rushing routes in the NFL. We briefly describe the main setup (Section 4.1) followed by an evaluation of our clustering with a focus on comparisons to a naive K -means algorithm (adjusted to the curve data at hand, Section 4.2). Finally, example evaluations of teams and players in the NFL during the period the data is available (the first 8 weeks of the 2021 season) are presented (Section 4.3).

4.1 Setup

In total, our data comprises of around 7200 passing plays from the 2021 season. Since we observe the routes of every defensive player on each play, we are left with roughly 80000 routes to cluster. We perform our analysis with $K = 11$ clusters. While this number is to some degree arbitrary, we chose it for various reasons. The aim is to obtain patterns of similar routes that allow one to distinguish between more and less threatening routes as well as to distinguish between the side from which a player is attacking the quarterback (left, middle, right)². Furthermore, irrelevant routes (in our use case coverage routes) should be captured in clusters isolated from the relevant ones. In general, deciding on the numbers of clusters is a highly-studied problem, and there are various approaches to do so in the

²Note that all our analyses are from the perspective of the defensive team, i.e. the players are moving to the left of the field in order to exert pressure on the quarterback.

classical K -means scenario (see e.g. [Charrad et al. \(2014\)](#) and references therein). We leave it to future research to adapt such ideas for the component-wise weighted curve clustering algorithm presented here. In our application, the more clusters the data is divided into, the more detailed the resulting clustering. Due to how the algorithm works, the focus is on the pass rush routes, i.e. a higher number of K will lead to a more granular clustering of specifically pass rush routes. For practitioners, this may be interesting. However, in order to present the result to a broader audience, a lower number of clusters is preferred to maintain interpretability. Furthermore, choosing a large number K results in very sparse clusters, i.e. clusters with only a few routes, especially in the case of a small amount of data. This may invalidate any analyses performed on such clusters. Choosing $K = 11$ results in a tradeoff, such that we are able to give insights on the behavior of the clustering algorithm without confusing the average reader while simultaneously being able to provide first analyses of pass rush. A more detailed analysis for varying the number of clusters can be found in [Appendix B.1](#).

In the following, we discuss the results of the weighted K -means algorithm in comparison to a classical K -means approach. Both of them are computed using the statistical computing environment R ([R Core Team, 2024](#)). For the K -means algorithm, we use the in-built R function `kmeans`, which uses the Hartigan-Wong algorithm (see [Hartigan and Wong, 1979](#)). Our implementation of the weighted K -means procedure follows the details from [Section 3](#). In order to mitigate the effect of getting stuck into a local optimum, 10 runs with different starting initializations are used, and the best run is selected.

4.2 Evaluation of the clustering

[Figure 4](#) provides a clear and intuitive insight into the behavior of the proposed clustering approach as opposed to a naive K -means algorithm. The figure displays the resulting prototypes from both algorithms. Recall that in our transformed coordinate system, the center of the x -coordinate is the line of scrimmage. Looking at the cluster prototypes from the classical K -means approach (bottom panel of [Figure 4](#)), only 2 pass rush clusters can be identified, whereas the other 9 clusters represent coverage clusters. Furthermore, the bottom right panel displays a zoomed version with the average pressure weights in each

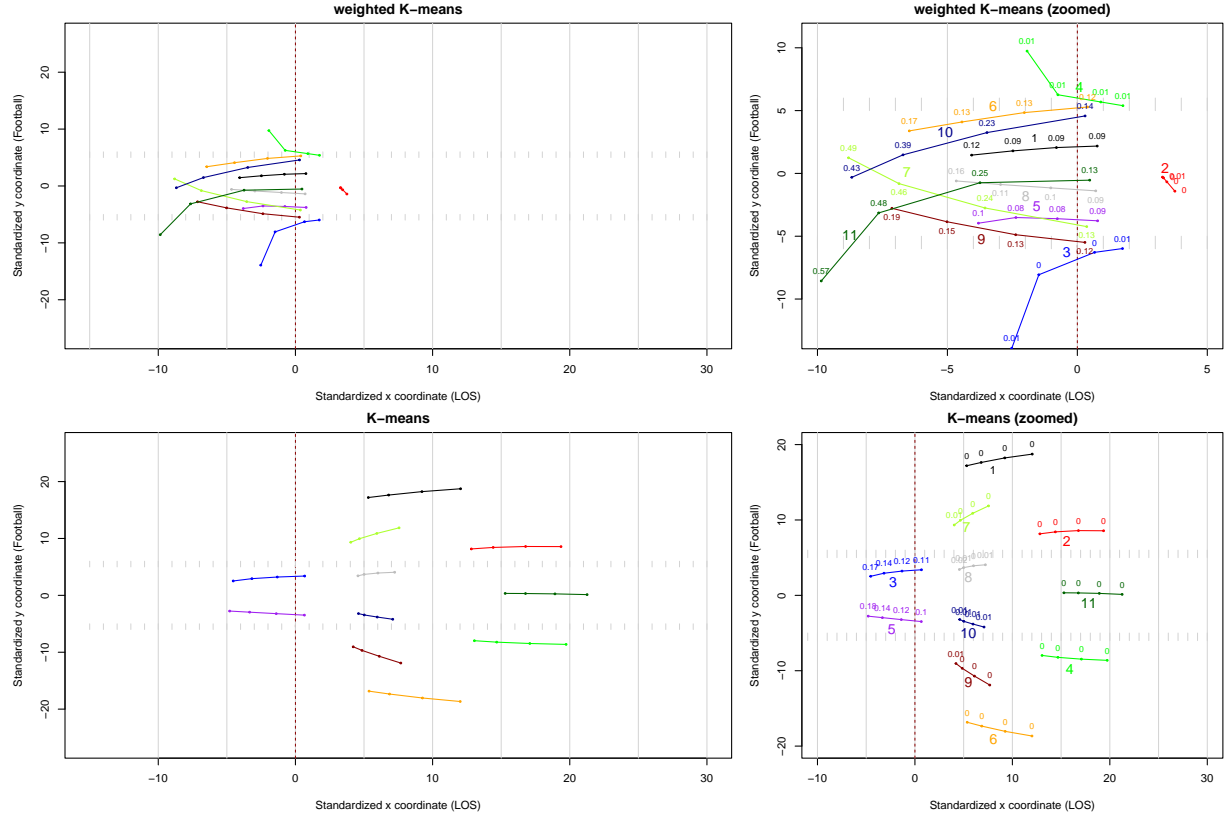


Figure 4: Cluster prototypes from the proposed weighted K -means algorithm vs. regular K -means clustering on defensive routes in the NFL. To distinguish the clusters, each one is assigned a numeric label (from 1 to 11) and a distinct color. Numbers with bigger font sizes correspond to cluster labels. Numbers with smaller fonts correspond to average weights for each cluster.

cluster at each point in time. For the coverage routes, these weights are almost always very close to zero, which is expected as players on such routes do not intend to attack the quarterback. The observed clustering behavior is not unexpected, as usually more defensive players are assigned to coverage tasks than to rushing the quarterback. However, for analyzing pass rush, such a pattern is undesirable. The two pass rush clusters are only distinguishable by location, there is one left-side and one right-side cluster, but the average pressure weights are almost similar in both cases. Conversely, the weighted K -means result (top panel of Figure 4) provides an entirely different clustering. It can be seen that most of the cluster centers roughly start at the line of scrimmage and move toward the direction of the quarterback. In the following, we analyze the figures taking the perspective of the defense, which is playing from left to right. Hence, when we speak of right-side clusters, we refer to clusters on the top (i.e., high y -axis values) of Figure 4. Similarly, left-side clusters correspond to clusters on the bottom (low values on the y -axis). At first glance, cluster 2 (the cluster with the smallest prototype, and the only cluster prototype not crossing the line of scrimmage) looks peculiar and does not seem to match the structure of the other prototypes. This cluster is the biggest in terms of routes assigned to it, as it captures most of the irrelevant backfield routes. Since the weights for these routes are mainly zero, they are clustered into one cluster, even though they are spatially far apart (see also Figure 5). Clusters 3 (leftmost cluster of Figure 4) and 4 (rightmost cluster) serve a similar purpose for the outside coverage routes. The other clusters (clusters 1, 5, 6, 7, 8, 9, 10, and 11) represent pass rushing clusters and it is possible to distinguish them by side of pass rush (left, middle, right) and by threat level of each route (low, moderate, high pressure). That is, we observe three clusters on the left side, three on the right side, and two middle-clusters. For each side, it is possible to distinguish between high probability of pressure clusters, moderate probability of pressure clusters, and low probability of pressure clusters, as can be observed from the average weights in the clusters (see also Figure 6). The shape of the high-pressure cluster in the middle (cluster 11) also allows for interesting insights. As can be seen, it tilts to the left side towards the end of the route. This pattern has an intuitive explanation in football: As in the NFL most quarterbacks are right-handed³, they tend to roll out to

³Actually, in our dataset the only left-handed quarterback is the Miami Dolphins' QB Tua Tagovailoa.

their right side in order to avoid pressure, leading to the kink in the prototypical route of this cluster towards the left. From Figure 4 it is evident that the proposed weighted K -means algorithm outperforms naive approaches and that accounting for the weights is important for extracting use case-specific patterns. More in-depth comparisons with the classical K -means procedure are found in Appendix B.2.

In order to understand the routes in each cluster and get a feeling for each of them, we display a sample of 30 routes per cluster for a subset of these in Figure 5. The top panel of the figure once more emphasizes that clusters 2, 3, and 4 serve as vessels for the coverage routes. The routes in these clusters mainly are backfield routes, with basically no weights at each time point. The curious shape of the clusters arises from the fact that the most relevant routes in that cluster for determining the shape of the prototype are the ones which are closer to the quarterback (and thus obtain weights that are relatively higher). The bottom left panel of Figure 5 compares routes from the three high-pressure clusters 7, 10, and 11. The routes from cluster 7 are generally on the left side, while the routes from cluster 10 cover the right side, thus we are able to distinguish between the location of routes. Cluster 11 contains mostly routes that end to the far left (from a defensive perspective) and thus correspond mainly to the routes where the quarterback tried to avoid pressure by rolling out to his right side. Lastly, in the bottom right panel, we compare two clusters from the left side, namely the high-pressure cluster 7 and the moderate-pressure cluster 9. Clearly, the routes in both clusters are quite similar, however, it can be observed that routes in a high-pressure cluster tilt a bit more toward the position of a hypothetical quarterback, which suggests that the defensive players on routes in these clusters were able to approach the quarterback more often. Obviously, this is not necessarily true since we don't know where exactly the quarterback was on each route. However, the on-average higher weight at the endpoint of the routes in this cluster supports the finding, that defenders are in a more favorable position for exerting pressure on the quarterback.

Finally, we can conduct brief sanity checks for the resulting clusters. The left panel of Figure 6 displays the observed average pressure in each cluster. The plot confirms that clusters 7, 10, and 11 are high-pressure clusters, while clusters 6, 8, and 9 are moderate probability clusters, and 1, respectively 5, may be considered low probability of pressure

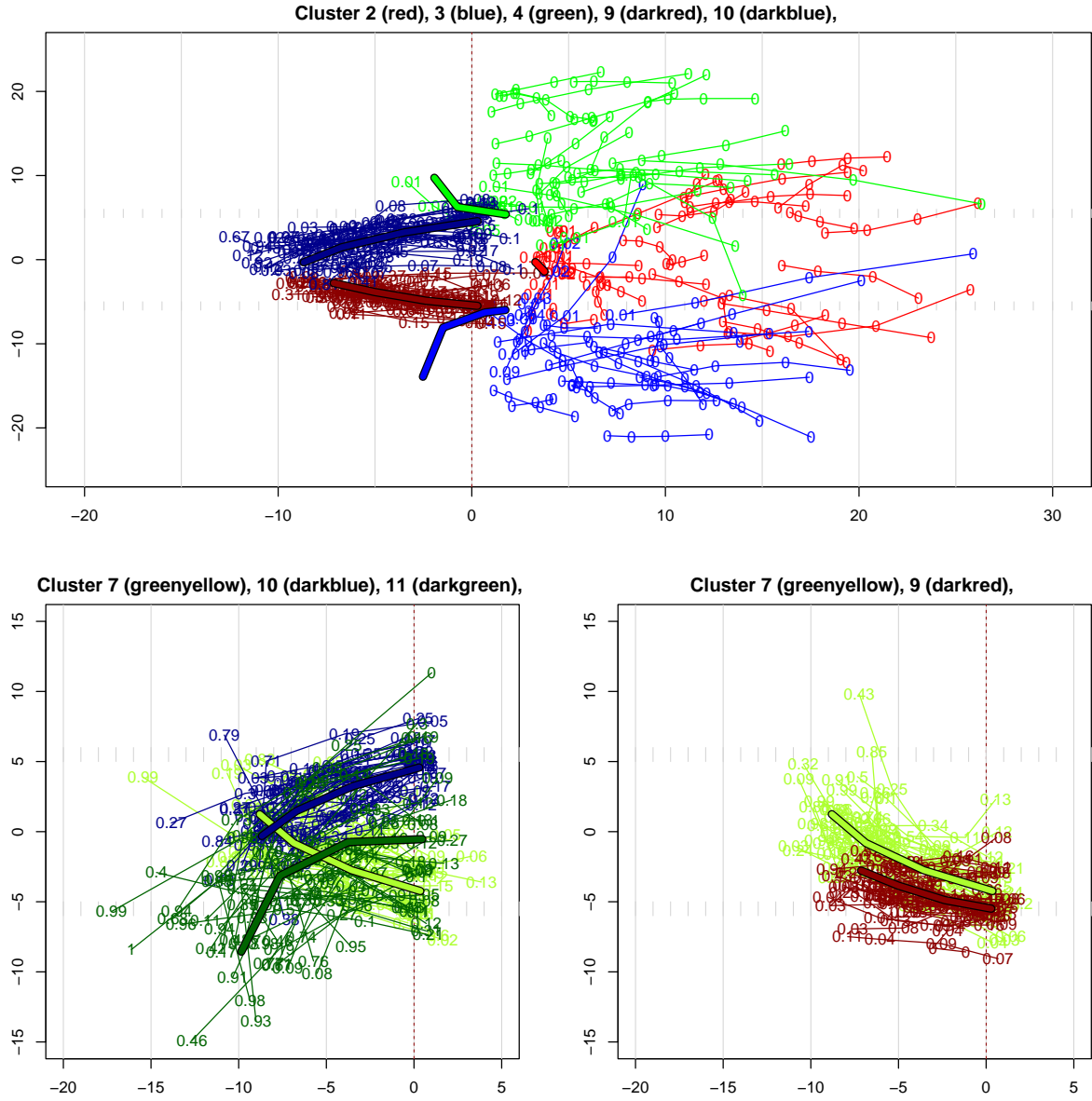


Figure 5: Sample routes from specific clusters. Top: Three coverage clusters (2,3,4), one right side cluster (10) and one left side cluster (9). Bottom left: Three clusters with high probability of pressure (7,10,11). Bottom right: Two left side clusters (7,9).

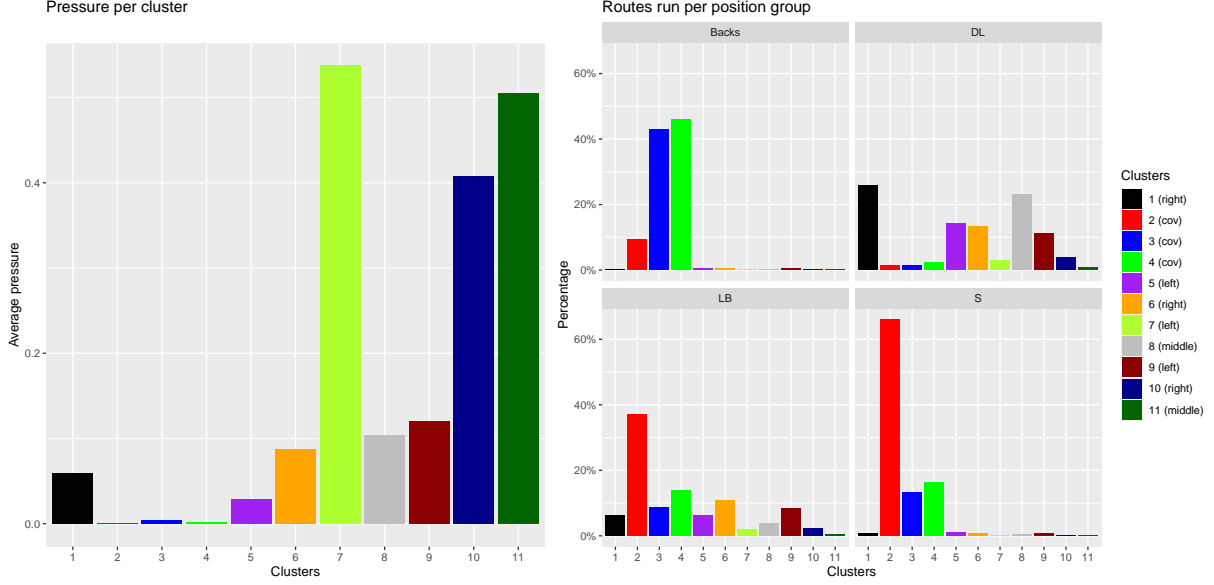


Figure 6: Left: Observed percentage of pressure in each of the clusters. Right: Observed proportion of routes run by player groups (Conerbacks, Defensive Linemen, Linebacker, Safety)

clusters. Furthermore, we observe barely any pressure in clusters 2-4, which should also not be the case as they represent coverage clusters⁴. The right panel of Figure 6 displays the route usage of different defensive playing positions. The general domain-specific intuition is captured well by the graphic. Cornerbacks are mostly found in clusters 3 and 4, i.e. the outside coverage routes, whereas safeties mainly load on cluster 2, namely the middle backfield routes. Linebackers are used most flexibly and distributed over all clusters. We observe them mostly in coverage clusters, which is also due to them being the biggest in size. Lastly, defensive linemen mainly run pass rush routes, where we observe them primarily in moderate pressure probability clusters, which highlights the difficulty of exerting pressure on the quarterback.

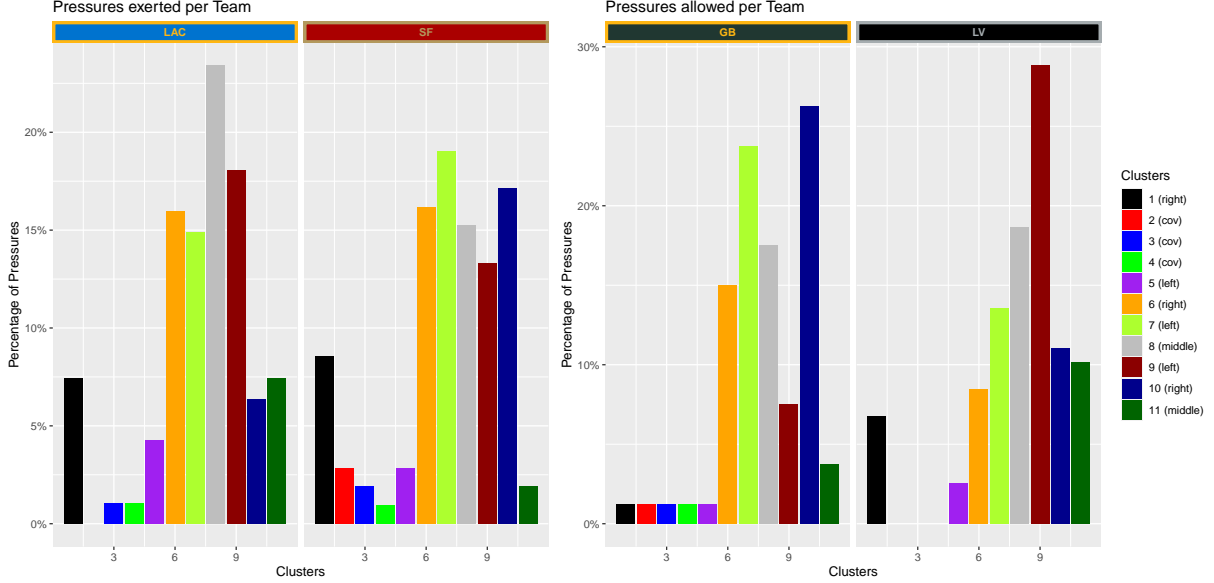


Figure 7: Left: Percentage of pressure exerted by teams in each cluster (analysis of defensives strength). Right: Percentage of pressure allowed by teams in each cluster (analysis of offensive weakness)

4.3 Examples analyses in the NFL

In this section, we provide some initial examples for using the proposed clustering to gain insights into the pass rushing behavior and ability of teams and players. In Figure 7, teams are analyzed in two ways. First, we focus on pass rushing strengths of the defenses. In the left panel, we summarize all the pressure routes of the LA Chargers and the San Francisco 49ers. The graph displays the percentage of pressure routes assigned to each cluster. It can be seen, that the Chargers are more effective on the left (more routes in clusters 7 and 9 than in 6 and 10) and the middle (clusters 8). The 49ers on the other hand, seem to be equally effective from the sides, but less effective from the middle. We can draw similar insights for the offense. This is displayed in the right panel of Figure 7, where we observe all the routes that an offensive team allowed pressure and their respective cluster assignments. Obviously, this is only a snapshot, because often being able to exert pressure

⁴Note that the observed pressure in the clusters is not zero, which means that some routes in these clusters resulted in a pressure to the quarterback. However, inspecting these routes shows that they mainly represent routes from broken plays.

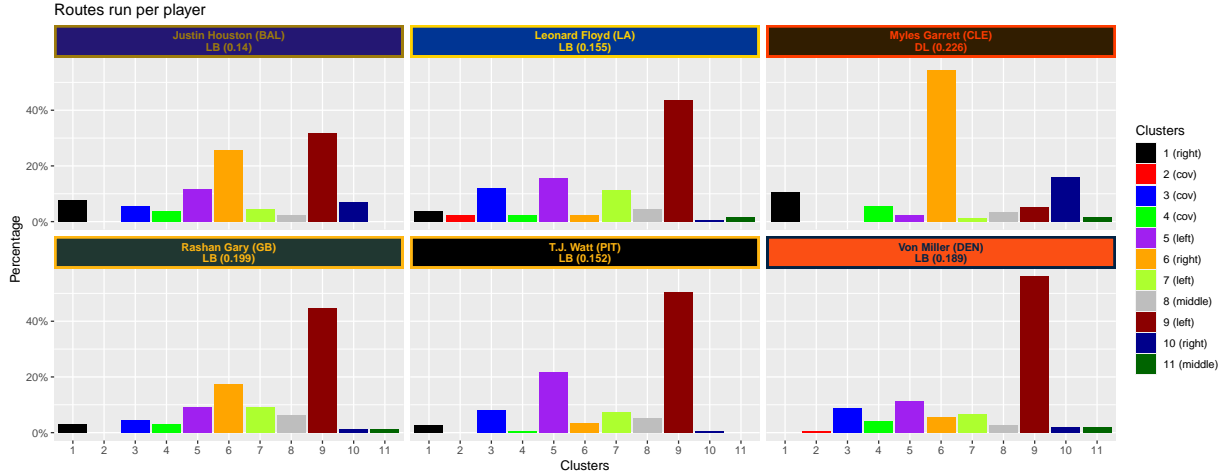


Figure 8: Route profiles from 6 top edge rushers of the NFL.

on the quarterback is a team effort. That being said, it is clear that Figure 7 provides only a glimpse of the possible analyses.

Instead of analyzing teams, it is also possible to gain insight into players and their pass rushing ability as well as usage. Figure 8 displays the pass rush routes run by 6 of the league's top edge rushers. From this plot, it can be seen how the usage of players varies and from which side they mostly attack. Justin Houston for example is used quite flexibly and found on both, the right and the left side (clusters 6 and 9). Von Miller, on the other hand, is mainly found on the left side, Myles Garrett on the right side. Such an analysis is helpful in understanding how coaches use their players in specific situations. However, it does not allow for assessing the effectiveness of players. The radar plots in Figure 9 try to fill that gap. We designed them in the following way: On the top of the plot, the high probability of pressure clusters are displayed, where the cluster on the left side is to the left and the one on the right side vice versa. On the bottom the low pressure probability clusters are found, and in between the one with moderate probability. The grey area displays the average observed probability of pressure in each cluster, whereas the colored lines depict the observed pressure probabilities for the players. A takeaway from the plot is that Myles Garrett outperforms the average in nearly all clusters, showing particular dominance in right-side clusters. Rashan Gary is only within average on the left side and slightly outperforms the average on the right side. This is interesting since we

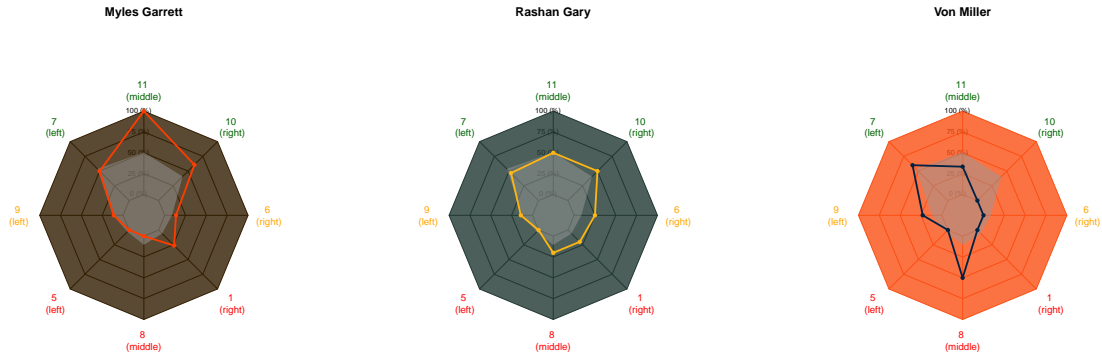


Figure 9: Radar plots for three players in the NFL.

observe from Figure 8 that he is found more often on the left side.

While the results provided in this section already give an interesting insight into the pass rushing behavior of NFL teams and players, we believe that there is still a lot of potential for further discoveries. Additionally, the small amount of data (we only have access to the first 8 weeks of the 2021 season) only allows for limited analyses. In the next section, we discuss possibilities for future directions, but we leave it to practitioners and future work to develop more thorough metrics from our clustering procedure.

5 Discussion

In this work, we introduced a novel approach for clustering curves for the case where weights are available at each time point of observation. In sports, such a setup is commonplace, as we observe routes of players moving on the pitch, and – depending on the use case – weights may often be derived in a natural way. We provide a specific use case, namely the clustering of pass rush routes. First, the routes of defensive players are augmented by weights, which at each point in time represent the probability of a defensive player exerting pressure on the quarterback. In this project, pressure weights are derived by carefully setting up an appropriate machine learning model. Along the way, a framework for unitizing routes of different lengths using Bézier curves is introduced. Next, the preprocessed weighted

routes are clustered using a novel extension of the K -means algorithm, which is well-suited for weighted curve data. We compare the clustering from our algorithm with a classical K -means extension for curve data and provide visual intuition on the behavior of the clustering. Results demonstrate that the novel clustering procedure works remarkably better than a naive K -means approach. Furthermore, it provides a structure, which aligns with domain-specific intuition regarding pass rushing in American football. Finally, we present a first set of example analyses of pass rush in the NFL using data from the first 8 weeks of the 2021 season.

5.1 Future work

In this section, we discuss possible directions for future work. First, at the moment, we mainly use the clustering as a visual tool from which we draw first insights. An interesting avenue is the use of the clustering results in downstream tasks. For example, imagine one is interested in predicting which defensive player is going to rush the passer, and which decides to go in coverage. The behavior of individual players is dependent on the personnel on the field and is influenced by the choices of the defensive coaching staff. Provided enough data is available, one may leverage the historical information on the routes as given from the clusters in connection with cluster information on the other 10 players on the field for predicting pass rush behavior in specific situations. Along the same lines, it could even be helpful to use the clustering information for the prediction of route combinations of more than one player in specific situations.

Second, again conditional on sufficient training data, a specific team-based clustering would allow for more insight on pass rushing management as well as offensive handling of pressure. The idea is, instead of clustering all routes available in order to get a general set of clusters over all teams in the league, it may be interesting to only cluster routes of a specific team. However with only 8 weeks of data available, we do not expect to get reliable insights and leave this to future work when more data is available.

Third, interesting insights may be drawn from varying the approach for deriving weights. In this work, we use a machine learning algorithm for deriving pressure weights, however, there are a number of other possibilities to derive weights for a route. A particular example

that comes into our mind is using the STRAIN values derived in [Nguyen et al. \(2024\)](#) as weights. These values can similarly be interpreted as a measure of pressure on the quarterback at each point in time. An advantage is that they are computed in a much simpler manner without relying on a machine learning algorithm, and instead only taking into account speed and distance to the quarterback. Although we believe that the STRAIN values are correlated with our pressure weights, their stability over plays (compare Section 4.3. of [Nguyen et al., 2024](#)) may be helpful in our clustering procedure and lead to more pronounced results.

Finally, the presented approach for clustering pass rush routes could be extended in two ways. On the one hand, the preprocessing procedure can be improved. At the moment, we rely on fitting Bézier curves in order to extract features of the same length for the clustering part. However, a more natural way may be to learn a suitable feature representation of each route from path signatures, which is a method of describing and deriving information from unparametrized paths. For more details on path signature features and their usage, we refer to [Yang et al. \(2022\)](#). These path signature features could further be augmented by weights and plugged into the clustering algorithm. On the other hand, the clustering procedure itself could be adapted to allow for soft clustering of the routes. A natural approach would be to extend our methodology to a fuzzy setting, i.e. to optimize a modified objective function

$$\sum_{i=1}^N \sum_{k=1}^K \sum_{j=1}^J u_{i,k}^m w_{i,j} (z_{i,j} - p_{k,j})^2, \quad (8)$$

where $u_{i,k}^m \geq 0$, $\sum_{k=1}^K u_{i,k} = 1$, represent cluster membership degrees and $m > 1$ controls the fuzziness of the algorithm.

5.2 Potential use cases in other sports related areas

Besides the directions for future work discussed in the previous section, our framework offers opportunities for interesting research in other sports domains. We briefly sketch possible use cases for offensive assignments in football as well as for possessions in soccer. In soccer, we can divide the game into so-called possessions, which are sequences of consecutive actions by a team. These can be augmented quite naturally by weights, which represent the value

of an action at a certain time point, e.g. measured by the probability of scoring a goal from the end of the action (expected goals (xG), [Robborechts and Davis, 2020](#)) or the probability of scoring a goal after i more actions (VAEP, [Decroos et al., 2019](#)). Similarly to the pass rush application, this would result in a clustering where more emphasis is put on more threatening possessions. This is highly desirable since these usually are the possessions a team is interested in analyzing.

Likewise, for investigating offensive routes in football, frameworks such as the EHCP model derived in [Deshpande and Evans \(2020\)](#), which assign catch probability weights, can be leveraged. The authors derive completion probabilities at each point in time for each route run during a passing play. Thus the offensive routes are given as weighted curves and our clustering algorithm can be used directly. The clustering would emphasize routes with high completion probabilities and cluster these routes more thoroughly. The clustering has the potential to extend the analyses provided in [Deshpande and Evans \(2020\)](#), especially if sufficient data is available such that a clustering based on routes from one team is sensible.

A A model for pressure weights

We briefly describe our methodology for deriving pressure weights at each point in time. The model uses a number of features engineered from tracking data for deriving the probability of a player being able to pressure the quarterback during the play. Pressure in our work is defined as either hitting, hurrying, or sacking the quarterback and serves as outcome variable in the modeling process. We extract the following features for each defensive player at each point in time of each play:

- Distance to the Quarterback:
 - distance of defensive player,
 - average distance of offense (total and nearest 6),
 - average distance of defense (total and nearest 6, considered player excluded).
- Distance to opponents:
 - Nearest opponent, 2nd nearest opponent, 3rd nearest opponent,
 - average distance to nearest 6 opponents.
- Speed:
 - QB speed and defender speed.
- Acceleration.
- Distance traveled since snap.

To estimate the probabilities of a pressure on a play a statistical learning algorithm that is flexible (i.e. that is able to account for non-linear relationships and possible multicollinearity between variables) is necessary. For this task, a gradient boosting tree routine was implemented using the `xgboost`-R-package ([Chen et al. \(2023\)](#)). In order to find the optimal configuration, careful hyperparameter selection via 5-fold cross-validation on a parameter grid was performed. Our data is divided into groups of plays with the same

outcome since we observe a rushing player at each point in time. To keep this structure, the dataset was split in such a way, that we randomly sampled full plays for training and validation set during the tuning procedure. The best hyperparameters resulting from this procedure are

```
booster: gbtree
objective: binary:logistic
eval_metric: logloss
max_depth: 8
eta: 0.01528267
gamma: 0.03602356
subsample: 0.7297074
colsample_bytree: 0.639634
min_child_weight: 29
max_delta_step: 8
```

B More analyses of the resulting clusters

B.1 Varying the number of clusters

Figure 10 presents the resulting clusters when varying the number of clusters to $K = 5$ (upper panel of the figure) and $K = 20$ (lower panel of the figure). The general results from Section 4 are still observable. The weighted K -means algorithm focuses on pass rush clusters while using a naive K -means clustering results in more coverage clusters. Using a small number of clusters ($K = 5$) results in a very rough representation of the pass rush routes and does not allow for thorough analyses. Using $K = 20$ on the other hand, the plot is difficult to interpret, with there being a lot of clusters in similar locations. However, as a practitioner, such a clustering may be very interesting as it is clearly possible to obtain a more detailed summary of pass rushes.

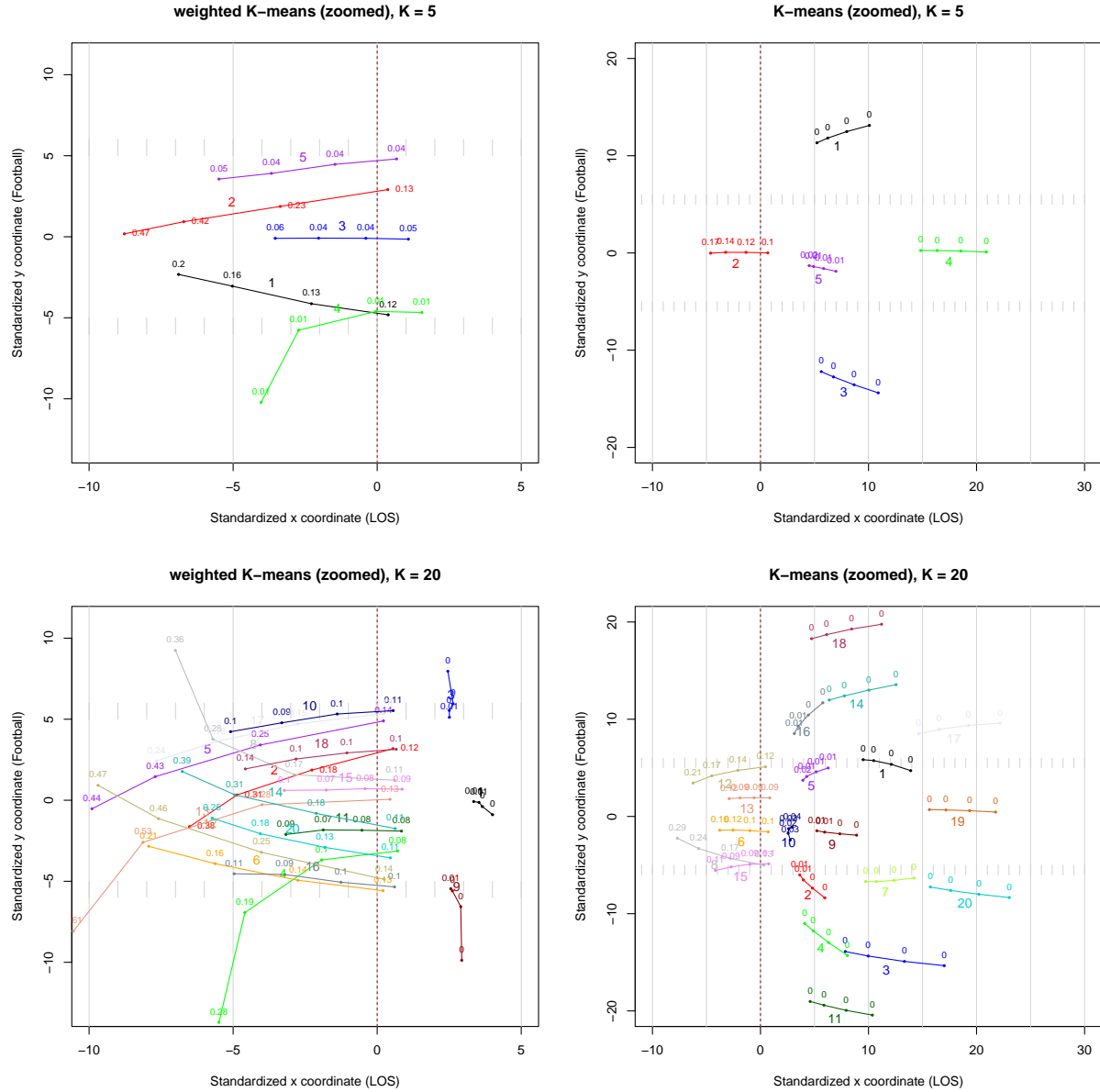


Figure 10: Cluster prototypes from the proposed weighted K -means algorithm vs. regular K -means clustering on defensive routes in the NFL. Upper panels: $K = 5$. Lower panels: $K = 20$.

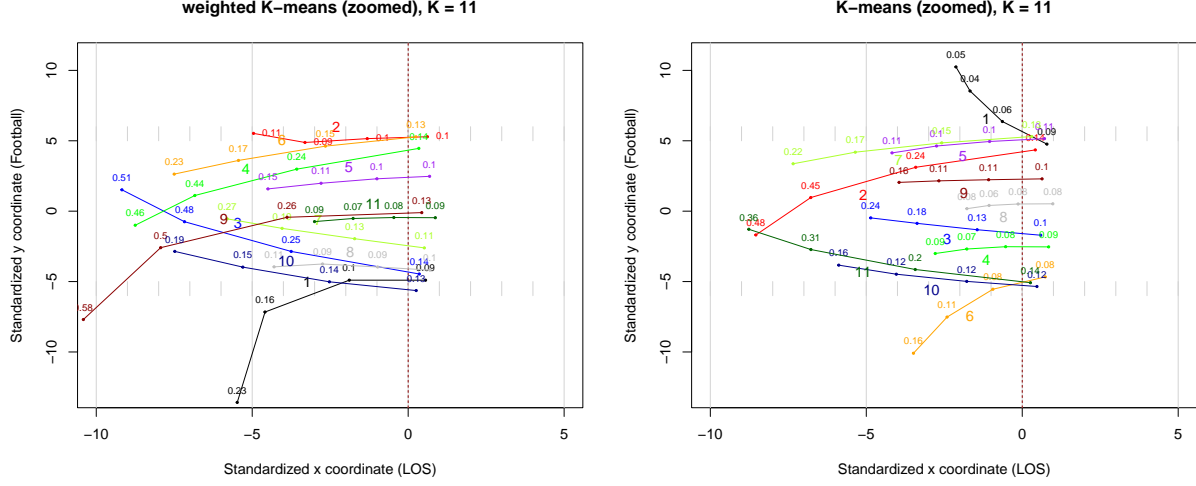


Figure 11: Cluster prototypes from the proposed weighted K -means algorithm vs. regular K -means clustering on only a subset of routes corresponding to pass rush.

B.2 A subset of interesting routes

In Section 4 we discussed the results of our novel weighted K -means algorithm in comparison to a naive K -means algorithm for all of the defensive routes in the dataset. One could argue, that when analyzing pass rush, it is quite easy to identify which players are going on pass rush, namely the ones that cross the line of scrimmage and move toward the quarterback. Thus, the question arises as to whether it is sensible to consider all defensive routes. The answer to that question definitely depends on the interest of the applicant. For example, as noted in Section 5.1, our clustering could be used for downstream tasks such as identifying pass rush before the play starts based on historical information. In this situation, it is surely important to analyze all of the defensive routes in the dataset. Otherwise, when the interest lies mainly in evaluating pass rush behavior, it might be sufficient to consider only a subset of the data. We briefly discuss the case, when only a subset of “interesting” routes is used for clustering. The results support our findings that a weighted approach is superior to clustering without weights.

In our case, the NFL big data bowl team provided a dataset where the roles of each player in each play were manually annotated. That is, for each defensive player we can map their role on a given play (coverage vs. pass rush) to the tracking data and distinguish

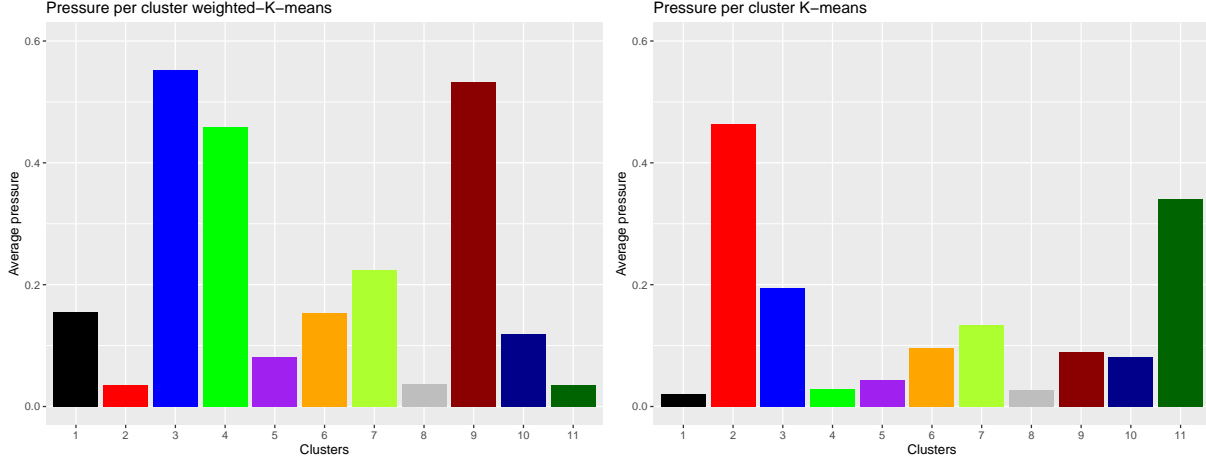


Figure 12: Observed percentage of pressure in each of the clusters. Left: Clusters from weighted K -means. Right: Clusters from the non weighted pendant.

between coverage and pass rush routes. In order to analyze the results from the clustering, we provide similar figures as in Section 4.2. Figure 11 displays the cluster prototypes from weighted K -means and from K -means. At first glance, the clustering seems quite similar. However, a more thorough inspection compared with domain knowledge indicates that there are subtle differences in favor of the weighted clustering. First, analyzing the resulting weights of the prototype curves as seen in Figure 11 shows that the clustering with weights allows for a more thorough distinction between effective and less effective routes. There are more cluster centers that exhibit higher respectively lower pressure weights at the end of the play, whereas for the classical K -means clustering the end of route weights are more homogeneous. Figure 12 supports the intuition and we see that the weighted approach leads to three high-pressure clusters (one middle, one left one, right), whereas such a clear identification is not possible in the non-weighted case. A similar observation can be made for clusters with moderate and low probability of pressure. Second, the routes from the weighted K -means clustering exhibit structures, which have a clearer interpretability from a domain-specific perspective. For example, cluster 9, the middle cluster which tilts to the left at the end of the route, again nicely corresponds to the natural behavior of right-handed quarterbacks rolling out to their right in order to avoid pressure. Similarly, cluster 1 captures the more extreme case where the quarterbacks are already far out of their pocket.

Lastly, we try to take a more statistical approach for comparing the clusters. In this case, we simply consider each route of the pass rush player separately and try to predict whether the running the route ends in a pressure or not, based solely on the cluster that the route is assigned to. That is, we use a binomial logistic regression model for modeling the outcome of a route (pressure or not) with the only covariate being the cluster number that the route is assigned. We train two models, one for the weighted K -means and one for the non-weighted K -means, and evaluate the predictive performance on a hold out set. Table 1 shows the result of this exercise. Based on all of the measures considered (Brier score, accuracy, F-score, and area under the ROC curve (AUC)) the model using the information from the weighted clustering has higher predictive power for pressure. This clearly suggests that there is value in using our weighted approach for analyzing pass rush, even when considering only a subset of routes.

Table 1: Comparison of the predictive power of the clusters from weighted K -means versus a classical K -means on the subset of all pass rush routes.

	BS	acc	F	AUC
wkm	0.088	0.833	0.403	0.763
km	0.091	0.784	0.371	0.750

References

- Baumer, B. S., Matthews, G. J., and Nguyen, Q. (2023). Big ideas in sports analytics and statistical tools for their investigation. *WIREs Computational Statistics*, 15(6):e1612.
- Burke, B. C. (2019). DeepQB: Deep learning with player tracking to quantify quarterback decision-making & performance.
- Charrad, M., Ghazzali, N., Boiteau, V., and Niknafs, A. (2014). NbClust: An R package

- for determining the relevant number of clusters in a data set. *Journal of Statistical Software*, 61(6):1–36.
- Chen, T., He, T., Benesty, M., Khotilovich, V., Tang, Y., Cho, H., Chen, K., Mitchell, R., Cano, I., Zhou, T., Li, M., Xie, J., Lin, M., Geng, Y., Li, Y., and Yuan, J. (2023). *xgboost: Extreme Gradient Boosting*. R package version 1.7.5.1.
- Chu, D., Reyers, M., Thomson, J., and Wu, L. Y. (2020). Route identification in the National Football League. *Journal of Quantitative Analysis in Sports*, 16(2):121–132.
- Decroos, T., Bransen, L., Van Haaren, J., and Davis, J. (2019). Actions speak louder than goals: Valuing player actions in soccer. In *Proceedings of the 25th ACM SIGKDD International Conference on Knowledge Discovery & Data Mining*, KDD ’19, page 1851–1861, New York, NY, USA. Association for Computing Machinery.
- Deshpande, S. K. and Evans, K. (2020). Expected hypothetical completion probability. *Journal of Quantitative Analysis in Sports*, 16(2):85–94.
- Dutta, R., Yurko, R., and Ventura, S. L. (2020). Unsupervised methods for identifying pass coverage among defensive backs with nfl player tracking data. *Journal of Quantitative Analysis in Sports*, 16(2):143–161.
- Eager, E. and Seth, T. (2023). Investigating trade-offs made by american football linebackers using tracking data. *Journal of Quantitative Analysis in Sports*, 19(3):171–185.
- Hartigan, J. A. and Wong, M. A. (1979). Algorithm as 136: A K-means clustering algorithm. *Journal of the Royal Statistical Society. Series C (Applied Statistics)*, 28(1):100–108.
- Hastie, T., Tibshirani, R., and Friedman, J. (2009). *The Elements of Statistical Learning: Data Mining, Inference, and Prediction, Second Edition*. Springer Series in Statistics. Springer New York.
- Howard, A., Blake, A., Patton, A., Lopez, M., Bliss, T., and Cukierski, W. (2022). NFL big data bowl 2023.

- Kinney, M. (2020). Template matching route classification. *Journal of Quantitative Analysis in Sports*, 16(2):133–142.
- Lopez, M. J. (2020). Bigger data, better questions, and a return to fourth down behavior: an introduction to a special issue on tracking data in the national football league. *Journal of Quantitative Analysis in Sports*, 16(2):73–79.
- MacQueen, J. B. (1967). Some methods for classification and analysis of multivariate observations. In Cam, L. M. L. and Neyman, J., editors, *Proc. of the fifth Berkeley Symposium on Mathematical Statistics and Probability*, volume 1, pages 281–297. University of California Press.
- Miller, A. C. and Bornn, L. (2017). Possession sketches : Mapping NBA strategies. In *Proceedings of the 2017 MIT Sloan Sports Analytics Conference*.
- Nguyen, Q., Yurko, R., and Matthews, G. J. (2024). Here comes the strain: Analyzing defensive pass rush in american football with player tracking data. *The American Statistician*, 78(2):199–208.
- R Core Team (2024). *R: A Language and Environment for Statistical Computing*. R Foundation for Statistical Computing, Vienna, Austria.
- Reyers, M. and Swartz, T. B. (2021). Quarterback evaluation in the national football league using tracking data. *AStA Advances in Statistical Analysis*, 107(1):327–342.
- Robberechts, P. and Davis, J. (2020). How data availability affects the ability to learn good xG models. In Brefeld, U., Davis, J., Van Haaren, J., and Zimmermann, A., editors, *Machine Learning and Data Mining for Sports Analytics*, pages 17–27, Cham. Springer International Publishing.
- Yang, W., Lyons, T., Ni, H., Schmid, C., and Jin, L. (2022). *Developing the Path Signature Methodology and Its Application to Landmark- Based Human Action Recognition*, pages 431–464. Springer International Publishing, Cham.

Yurko, R., Ventura, S., and Horowitz, M. (2019). nflwar: a reproducible method for offensive player evaluation in football. *Journal of Quantitative Analysis in Sports*, 15(3):163–183.